

# ASID DESIGNER HOUSE 1990

Presented by The Asheville Art Museum Auxiliary

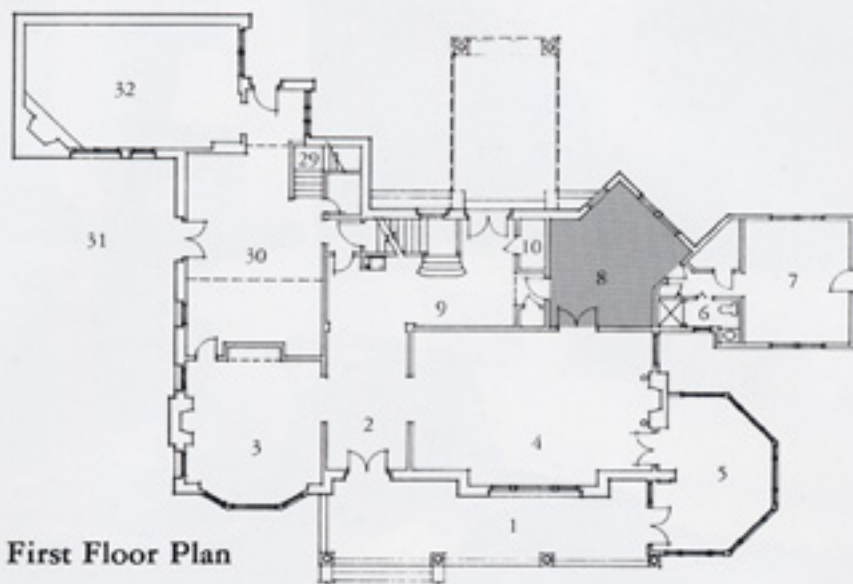


173 Macon Avenue, April 29 - May 20





## The Sitting Room



First Floor Plan

### Interior Design by Susan Drake Nilsson, ASID

#### Area Description:

Varying shades of greens in the wallcovering create a soothing retreat for reading, listening to music, or entertaining guests.

#### Profile:

A North Carolina native with a B.S. degree in Interior Design from Western Carolina University, Nilsson has been actively involved in interior design since 1980. She established her namesake firm in 1987 which specializes in both residential and commercial interiors.



Projects include **The Richmond Hill Inn and Conference Center** and **The City Building Of Asheville**. Mrs. Nilsson is a professional member of ASID, serves on the board of the Smith-McDowell Museum, and is a provisional member of The Junior League Of Asheville.

#### Credits:

Fabrics, Wallpapers & Trims:  
*Brunschwig & Fils*  
Upholstery: *The Charles Stewart Company*  
Windows Shutters: *Joanna Custom Shutters*  
Workrooms: *Hollyhock & Swag, Sandy Belcher*  
Re-upholsterers: *Wagoners and Stephens, Asheville, NC*  
Painting: *Tony Haggerty, Fairview, NC*  
Wallcovering Installation: *Joe Wakefield, Asheville, NC*  
Special appreciation: *Mary Powell, Office Manager, Robyn Morris, Allied Member ASID.*  
Paint: *Benjamin Moore Paint through Pritchard Paint and Glass of Asheville, NC*  
Carpet & Fabric Protection by *Fiber-seal Fabric Care Systems of Charlotte, NC*

Susan Drake Nilsson 60 Biltmore Avenue, Asheville, North Carolina